

Safe and reliable Shore power connections

Marine | Mobile | Offgrid



Enjoy Green Energy

whisperpower.com

State-of-the-art Shore Power connections

For movable objects, vehicles and vessels, WhisperPower provides convenient Plug and Play cable sets. This is the “life line” from land power to the object, ensuring that the technical equipment remains powered all the time.



A vital component of the land power connection is the battery charger which recharges and maintains the voltage for the service, starter and the bow thruster batteries.

The WhisperPower battery charger or inverter / charger Combi ensures that the battery remains in perfect condition throughout the whole year whilst also ‘buffering’ sufficient current to provide the various 12, 24 VDC and/or 120 / 230 VAC electrical devices with power whilst on board. The next few pages cover the necessary installation components to ensure uninterrupted and safe connection to land. All electrical thru-hull inlets have an LED indicator that turns on when the connection is successful.

Main ingredients for a reliable land power connection

- Complete cable sets for land to object connection, 15 or 25 metre, 16 or 32 Amps, complete with connectors / plugs
- Thru-hull stainless steel inlets
- Plugs to fit the inlets
- Cable storage case
- Industrial cable reel

The Basic Kit

Our Land Power Kit is a great solution for installers who want to reduce installation time and at the same time enhance the quality of the electrical system. A WhisperPower Shore Power kit consists of 15 meter yellow land power cable and storage bag, a compact 16 A stainless steel inlet with signal LED (power ON-OFF), a connection cable to plug into an electrical box with earth-leak protector (GFI) and a double socket with cable connection to the electrical box. All connections are waterproof, the whole system complies with CE regulations. Amperage 16 A. Optional: plug-in battery chargers or Combi's.



CABLE SETS WITH IEC 60309 PLUGS (CABLE SET STORAGE BAG INCLUDED)

Article Number	50214751	50214752	50214741	50214742	50214744
TECHNICAL SPECIFICATIONS					
For use up to	16 A / 250 VAC	16 A / 250 VAC	25 A / 250 VAC	25 A / 250 VAC	32 A / 250 VAC
Cable	H07BQ-F 3G1, 50 mm ²	H07BQ-F 3G1, 50 mm ²	H07BQ-F 3G6,00 mm ²	H07BQ-F 3G6,00mm ²	H07BQ-F 3G6,00mm ²
IP Rating	IP56	IP56	IP56	IP56	IP56
Certification	CE	CE	CE	CE	CE
LED Power Indication	Yes	Yes	Yes	Yes	Yes
Length	15 m	25 m	15 m	25 m	25 m

Components

Shore connect inlets



	16 A Polyamide version	16 A Stainless Steel version	32 A Stainless Steel version
Article Number	50214680	50214684	50214685
TECHNICAL SPECIFICATIONS			
For use up to	16 A / 250 VAC (max.)	16 A / 250 VAC (max.)	32 A / 250 VAC (max.)
IP Rating	IP56	IP56	IP56
Certification	CE	CE	CE
Dimension	Ø 87 mm	Ø 87 mm	Ø 105 mm
Weight	230 g	340 g	650 g

Galvanic isolators



	WP-GI Galvanic isolator 16 A	WP-GI Galvanic isolator 32 A	WP-GI Galvanic isolator 64 A
Article Number	60110140	60110150	60110155
TECHNICAL SPECIFICATIONS			
Maximum current	16 A	32 A	64 A
Peak current	1600 A / 20 ms	1600 A / 20 ms	6000 A / 20 ms
Connection	2x M6	2x M6	2x M6
Cooling fins	Aluminum	Aluminum	Aluminum
International Protection rating	IP67	IP67	IP67
Material	Anodised Aluminum	Anodised Aluminum	Anodised Aluminum
Dimensions (W x D x H) in mm	200 x 60 x 120	200 x 63 x 163	335 x 63 x 164

Connecting a yacht, ship or vehicle to land power can consequently lead to sustaining damage if galvanic isolation has not been taken in to account. Galvanic corrosion can drastically damage a vessel's underwater metal parts. Corrosion can be partially prevented by the application of galvanic anodes (sacrificial anodes) below the waterline. How effective an anode is depends on a good electrical connection, and is directly proportional to the surface area of the anode.



PLUGS (STANDARD WITH CABLE SETS)

Article Number	50214688	50214689
TECHNICAL SPECIFICATIONS		
For use up to	16 A / 250 VAC (max.)	32 A / 250 VAC (max.)
IP Rating	IP56	IP56
Certification	CE	CE

WP-AC

Basic Kit

230 VAC "only"

BASIC KIT "ONLY"

Article Number	50214745
Shore Power Cord Set 15 meter	
Stainless Steel Inlet with cord Electrical Cabinet	
Internal Cable 1 meter	
Internal Cable 2 meter	



WALL SOCKET

Dimensions (W x D x H) in mm	75 x 65 x 210
Insulation class	IP55
Voltage	max. 250 VAC
Current	16 A
Weight	320 g



STAINLESS STEEL SHORE POWER INLET

Dimension	Ø 90 mm
Length of connection cord	40 cm
Insulation class	IP56 / IP68 (cord)
Conductor area cord	3 x 2.5 mm ²
Voltage	max. 250 VAC
Current	16 A



ELECTRICAL CABINET

Dimensions (W x D x H) in mm	80 x 100 x 260
Insulation class	IP55
Voltage	max. 250 VAC
Current	16 A
Weight	560 g



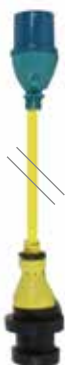
LAND POWER CORD SET ADAPTOR 16 A

Article Number	50214720
Weight	2.1 kg
Length	15 m
Dimension	Ø 8.5 mm
Temperature range	-40 °C up to 80 °C
Insulation class	IP56
Conductor area	3 x 1.5 mm ²
Voltage	250 VAC
Current	10 A



LAND POWER CORD SET P/N 2801

Dimension	Ø 8.5 mm
Temperature range	-40 up to 80 °C
Insulation class	IP56
Conductor area	3 x 1.5 mm ²
Voltage	250 VAC
Current	10 A
Length	15 m
Weight	2.1 kg

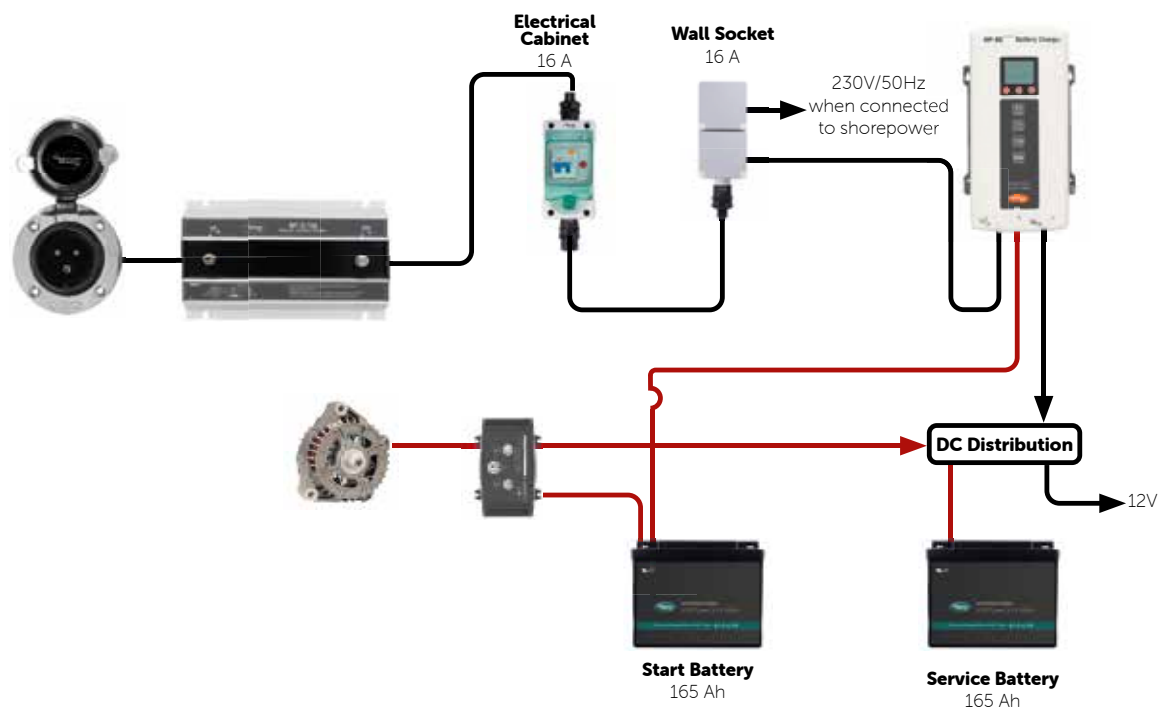


INTERNAL CABLE

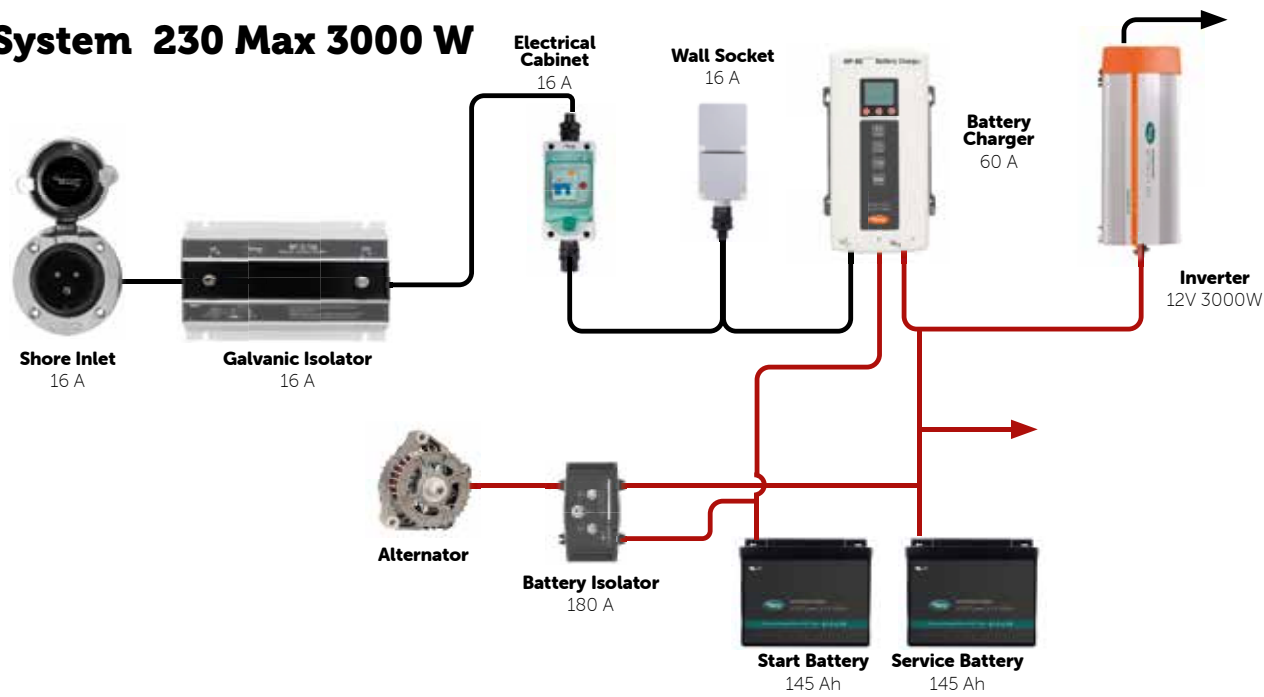
Dimension	Ø 11.3 mm
Cable lengths	1 m / 2 m
Insulation class	IP66 / IP68
Conductor area cord	3 x 2.5 mm ²
Voltage	250 VAC
Current	20 A
Weight	220 g (1 m) / 430 g (2 m)



Examples System Diagrams



System 230 Max 3000 W





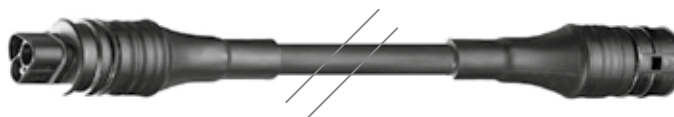
WHISPERPOWER LAND POWER CONNECT 230 VAC 50 HZ

Article Number	Model
50217161	WP-QC Distribution block, 1 input (Female) and 3 outputs (Male) 3 pole 250 VAC / 20 A - Black
50217164	WP-QC Inlet - Chassis mounting - Female Black • 3 pole 250 VAC / 20 A
50217165	WP-QC Inlet - Chassis mounting - Male Black • 3 pole 250 VAC / 20 A



WHISPERPOWER LAND POWER CONNECT 230 VAC 50 HZ

Article Number	Model
50217140	WP-QC Mains Power Cord, FEMALE Crimp Socket • Free Ends, 1 m, Rubber 60°C Black - 3-wire L+N+PE
50217141	WP-QC Mains Power Cord, MALE Crimp Socket • Free Ends, 1 m, Rubber 60°C Black - 3-wire L+N+PE



WHISPERPOWER LAND POWER CONNECT 230 VAC 50 HZ

Article Number	Model
50217150	WP-QC - Extension cable female - male • 3 pole - 1.5 mm ² 1 m Black Rubber 60°C - 3-wire L+N+PE
50217151	WP-QC - Extension cable female - male • 3 pole - 1.5 mm ² 6 m Black Rubber 60°C
50217153	WP-QC - Extension cable female - male • 3 pole - 1.5 mm ² 10 m Black Rubber 60°C
50217154	WP-QC - Extension cable female - male • 3 pole - 1.5 mm ² 2 m Black PVC 70°C



Quick Connect unplugged



Quick Connect plugged

Sales outlets in more than 50 countries

Ask for our comprehensive generator brochure to discover our entire program.

sales@whisperpower.com

whisperpower.com

